

☆☆☆ 102 Series ☆☆☆

P/N: H102S**000

Material: Polyamide, UL 94V-0, Natural

Conductor: Alloy, Tin-Plated

Available: 2~20,22P

Mate with W102

Current Rating: 0.5A AC/DC (AWG#32)

0.2A AC/DC (AWG#36)

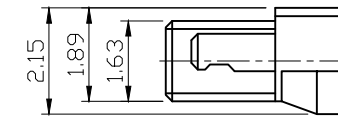
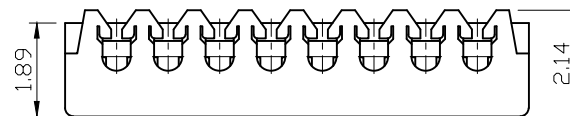
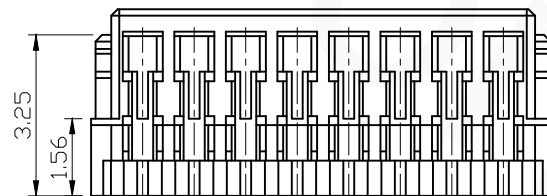
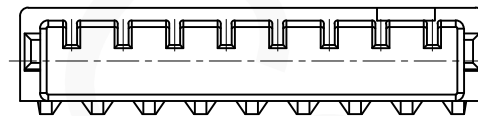
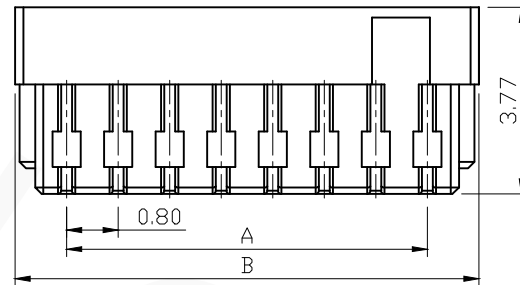
Voltage Rating: 30V DC

Contact Resistance: 20mΩ Max.

Insulation Resistance: 100MΩ Min.

Withstanding Voltage: 200V AC/minute

Temperature Range: -25°C~85°C



REVISIONS

REV	DESCRIPTION	DATE	DRAWN
A			

Circuitis	Dim. A	Dim. B
2	0.80	2.40
3	1.60	3.20
4	2.40	4.00
5	3.20	4.80
6	4.00	5.60
7	4.80	6.40
8	5.60	7.20
9	6.40	8.00
10	7.20	8.80
12	8.80	10.40
14	10.40	12.00
15	11.20	12.80
16	12.00	13.60
17	12.80	14.40
20	15.20	16.80
22	16.80	18.40

RoHS Compliant



TEL: 886-2-86871898 FAX: 886-2-86872959
Mail: tceldh@gmail.com Web: http://www.cnj.tw/

TITLE

.041"(1.04mm) Wire to Board Standard Housing

DIMENSION TOLERANCE

.x ±0.30 x° ±2°
.xx ±0.20
.xxx ±0.10

P/N	H102S**000	CHECKED	David	UNIT	mm	DATE	2010/10/25
DRAWN	Michael	APPROVED	Lily	SCALE	1:1	REV	A

☆☆☆ 102 Series ☆☆☆

P/N: W102V**T0S

Material: Polyamide, UL 94V-0, Natural

Contact: Alloy, Tin-Plated

Solder Tab: Brass, Tin-Plated

Available: 2~15 Pins

Mate with H102

Current Rating: 0.5A AC/DC AWG#32
0.2A AC/DC AWG#36

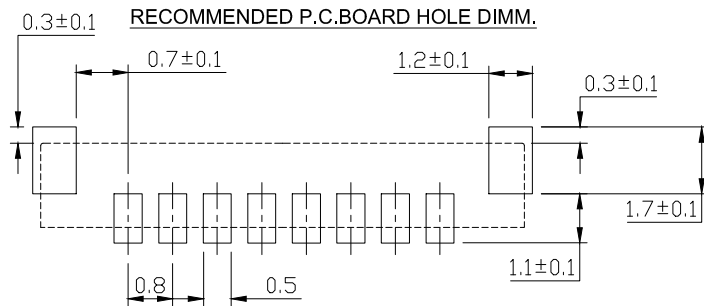
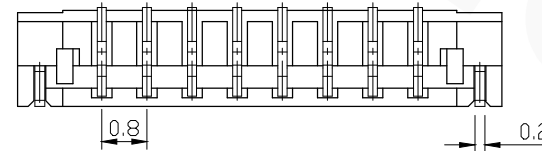
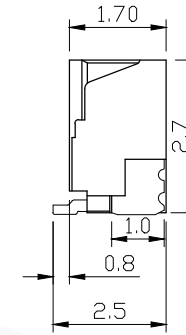
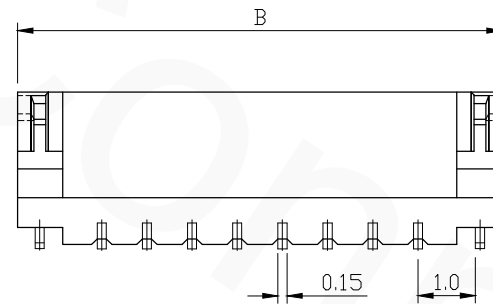
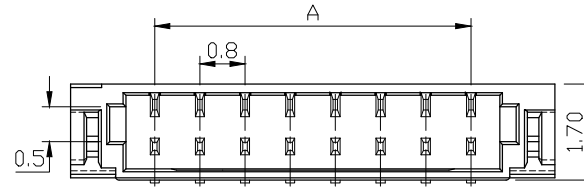
Voltage Rating: 250V AC/DC

Contact Resistance: 20mΩ Max.

Insulation Resistance: 100MΩ Min.

Withstand Voltage: 200V AC/minute

Temperature Range: -25°C~85°C



RoHS Compliant

REVISIONS			
REV	DESCRIPTION	DATE	DRAWN
A			

Circuitis	Dim. A	Dim. B
2	0.80	3.80
3	1.60	4.60
4	2.40	5.40
5	3.20	6.20
6	4.00	7.00
7	4.80	7.80
8	5.60	8.60
9	6.40	9.40
10	7.20	10.20
12	8.80	11.80
14	10.40	13.40
15	11.20	14.20
16	12.00	15.00
17	12.80	15.80
20	15.20	18.20
22	16.80	19.80



TEL: 886-2-86871898 FAX: 886-2-86872959
Mail: tceldh@gmail.com Web: http://www.cnj.tw/

TITLE
.031"(0.8mm) Wire to Board SMT Vertical Wafer

DIMENSION TOLERANCE
.x ±0.30 x° ±2°
.xx ±0.20
.xxx ±0.10

P/N	W102V**T0S	CHECKED	David	UNIT	mm	DATE	2010/11/12
DRAWN	Michael	APPROVED	Lily	SCALE	1:1	REV	A

☆☆☆ 102 Series ☆☆☆

P/N: W102H**G0S

Material: Polyamide, UL 94V-0, Natural

Contact: Alloy, Gold-Flash

Solder Tab: Brass, Tin-Plated

Available: 2~15 Pins

Mate with H102

Current Rating: 0.5A AC/DC AWG#32

0.2A AC/DC AWG#36

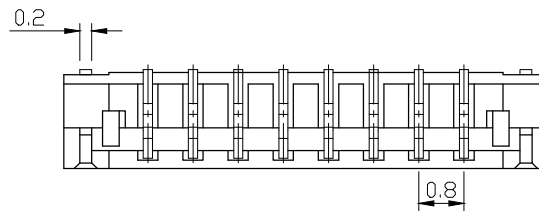
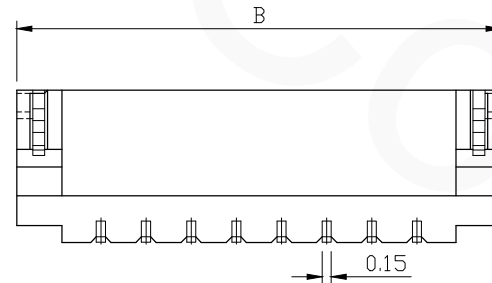
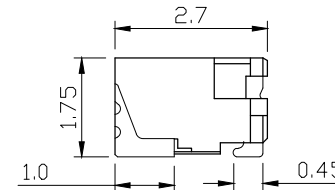
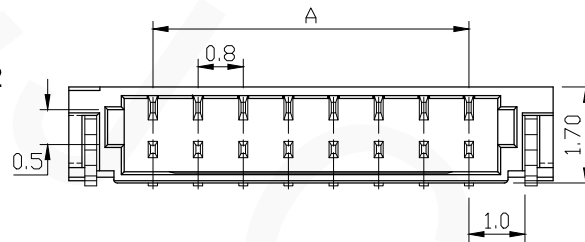
Voltage Rating: 250V AC/DC

Contact Resistance: 20mΩ Max.

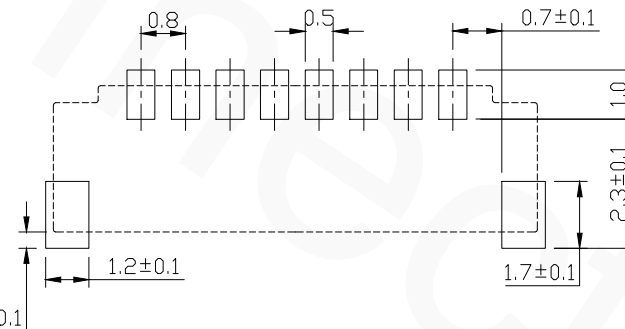
Insulation Resistance: 100MΩ Min.

Withstand Voltage: 200V AC/minute

Temperature Range: -25°C~85°C



RECOMMENDED P.C.BOARD HOLE DIMM.



REVISIONS			
REV	DESCRIPTION	DATE	DRAWN
A			

Circuitis	Dim. A	Dim. B
2	0.80	3.80
3	1.60	4.60
4	2.40	5.40
5	3.20	6.20
6	4.00	7.00
7	4.80	7.80
8	5.60	8.60
9	6.40	9.40
10	7.20	10.20
11	8.00	11.00
12	8.80	11.80
13	9.60	12.60
14	10.40	13.40
15	11.20	14.20
16	12.00	15.00
17	12.80	15.80
20	15.20	18.20
22	16.80	19.80

RoHS Compliant



TEL: 886-2-86871898 FAX: 886-2-86872959
Mail: tceldh@gmail.com Web: http://www.cnj.tw/

TITLE
.031"(0.8mm) Wire to Board SMT Horizontal Wafer

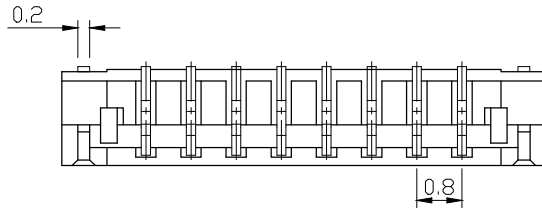
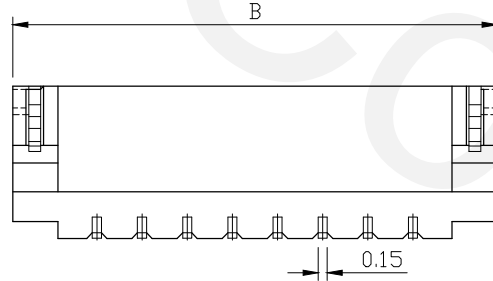
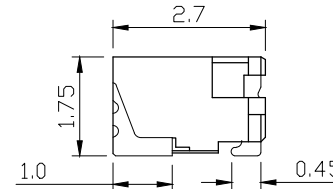
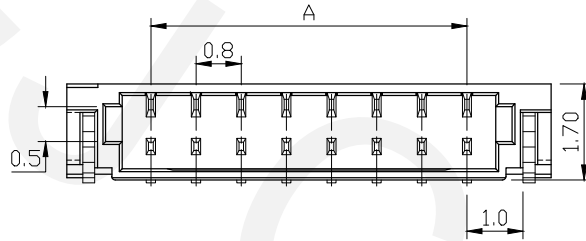
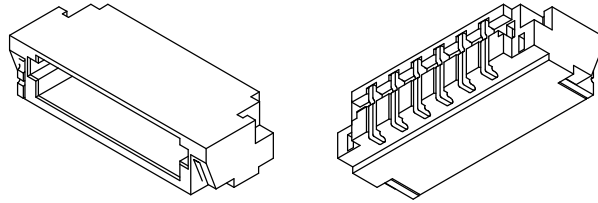
DIMENSION TOLERANCE
.x ±0.30 x° ±2°
.xx ±0.20
.xxx ±0.10

P/N	W102H**G0S	CHECKED	David	UNIT	mm	DATE	2010/11/12
DRAWN	Michael	APPROVED	Lily	SCALE	1:1	REV	A

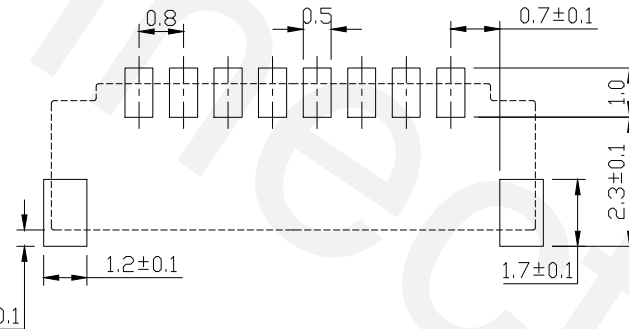
☆☆☆ 102 Series ☆☆☆

P/N: W102H**T0S
 Material: Polyamide, UL 94V-0, Natural
 Contact: Alloy, Tin-Plated
 Solder Tab: Brass, Tin-Plated
 Available: 2~15 Pins
 Mate with H102

Current Rating: 0.5A AC/DC AWG#32
 0.2A AC/DC AWG#36
 Voltage Rating: 250V AC/DC
 Contact Resistance: 20mΩ Max.
 Insulation Resistance: 100MΩ Min.
 Withstand Voltage: 200V AC/minute
 Temperature Range: -25°C~85°C



RECOMMENDED P.C. BOARD HOLE DIMM.



REVISIONS

REV	DESCRIPTION	DATE	DRAWN
A			

Circuitis	Dim. A	Dim. B
2	0.80	3.80
3	1.60	4.60
4	2.40	5.40
5	3.20	6.20
6	4.00	7.00
7	4.80	7.80
8	5.60	8.60
9	6.40	9.40
10	7.20	10.20
11	8.00	11.00
12	8.80	11.80
13	9.60	12.60
14	10.40	13.40
15	11.20	14.20
16	12.00	15.00
17	12.80	15.80
20	15.20	18.20
22	16.80	19.80

RoHS Compliant



TEL: 886-2-86871898 FAX: 886-2-86872959
 Mail: tceldh@gmail.com Web: http://www.cnj.tw/

TITLE
 .031"(0.8mm) Wire to Board SMT Horizontal Wafer

DIMENSION TOLERANCE
 .x ±0.30 x° ±2°
 .xx ±0.20
 .xxx ±0.10

P/N	W102H**T0S	CHECKED	David	UNIT	mm	DATE	2010/11/12
DRAWN	Michael	APPROVED	Lily	SCALE	1:1	REV	A