



# ☆☆☆ 128 Series ☆☆☆

P/N: T128P00T00

Material: Phosphor Bronze

Stamping Before Plating: 30~50u" Ni, 70~120u" Sn

Wire Range: AWG #28~#32

Packing: 15,000 PCS/Reel

Current Rating: 1A AC/DC

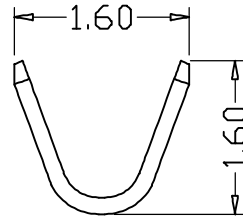
Voltage Rating: 50V AC/DC

Contact Resistance: 30m Max.

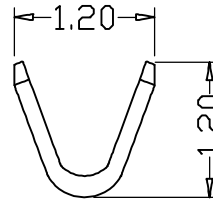
Insulation Resistance: 100M Min.

Withstanding Voltage: 500V AC/minute

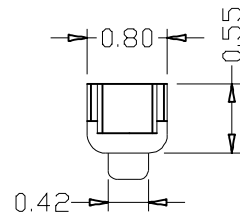
Operating Temperature Range: -25°~85°C



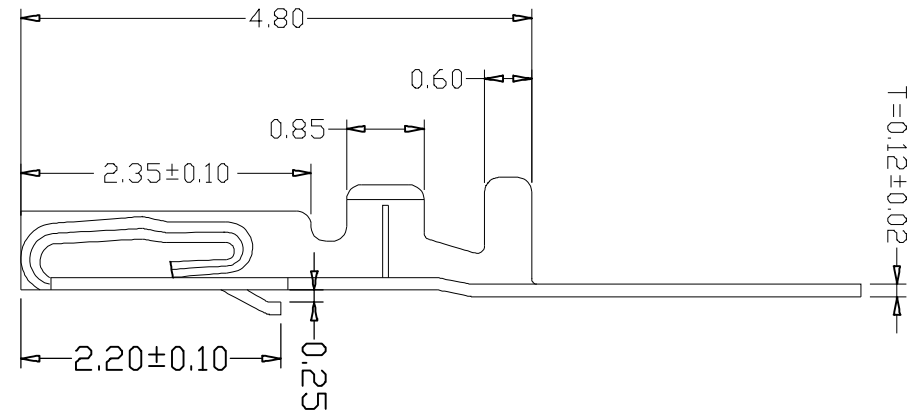
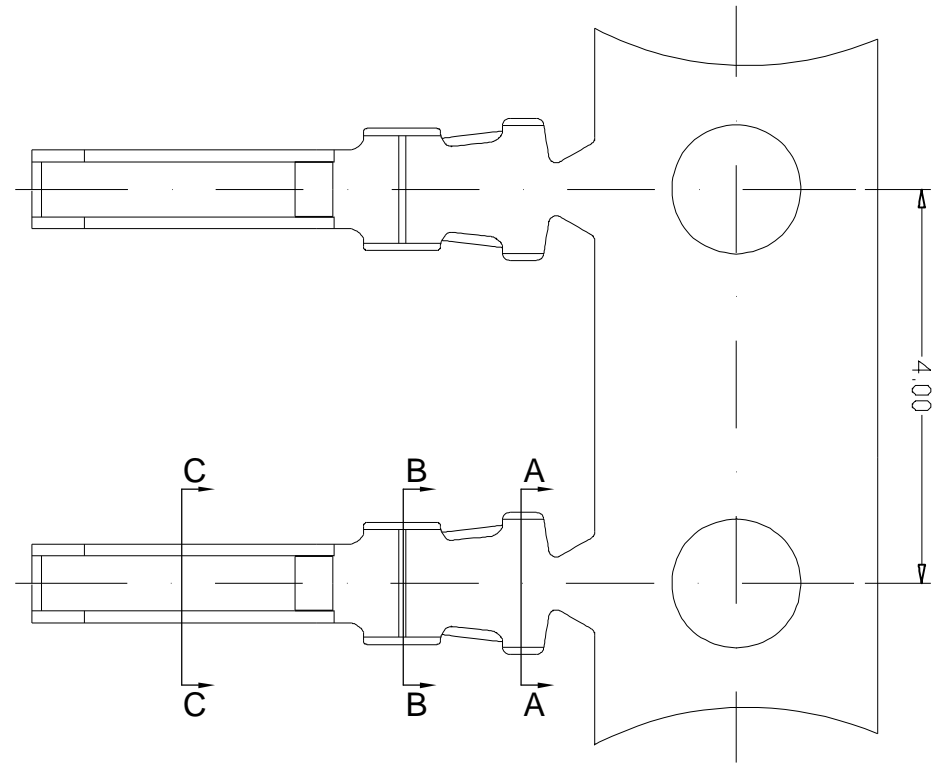
Section A-A



Section B-B



Section C-C



TITLE

.049"(1.25mm) Terminal

.x ±0.30 x° ±2°  
.xx ±0.20 DIMENSION  
.xxx ±0.10 TOLERANCE

RoHS Compliant @ <http://www.cnj.tw/>

P/N	T128P00T00	CHECKED	David	UNIT	mm	DATE	2014/2/22
DRAWN	Michael	APPROVED	Lily	SCALE	1:1	REV	A

# ☆☆☆ 128 Series ☆☆☆

P/N: W128H\*\*T0S

Material: Nylon 9T, UL 94V-0, White

Conductor: Brass, Tin-Plated

Available: 2~15P

Current Rating: 1A AC/DC

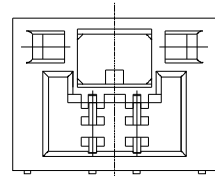
Voltage Rating: 50V AC/DC

Contact Resistance: 30m Max.

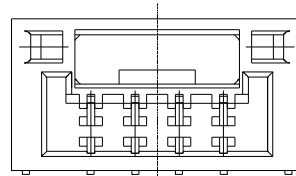
Insulation Resistance: 100M Min.

Withstanding Voltage: 500V AC/minute

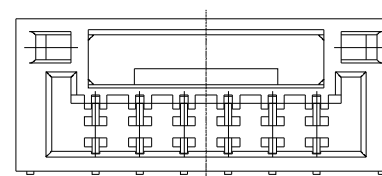
Operating Temperature Range: -25°~85°C



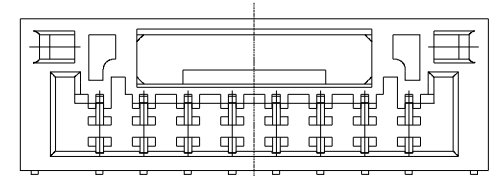
2PIN



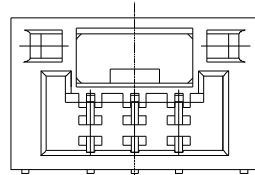
4PIN



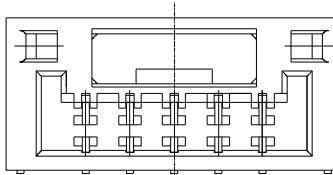
6PIN



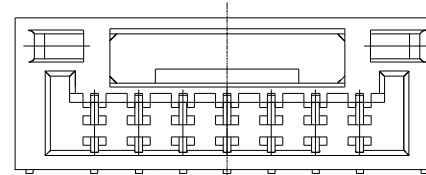
8PIN



3PIN

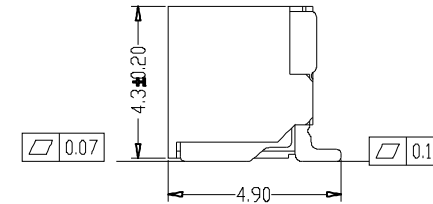
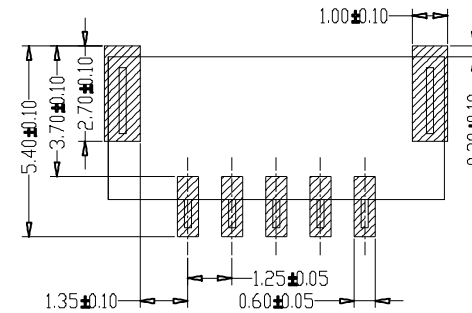
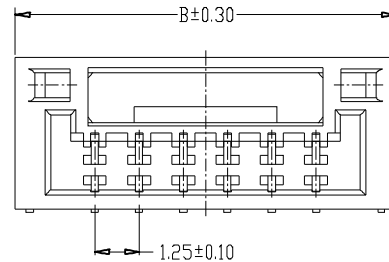
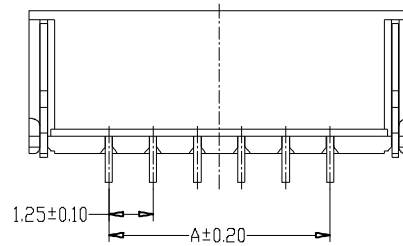


5PIN



7PIN

### RECOMMENDED P.C.BOARD HOLE DIMM.



Circuitis	Dim. A	Dim. B
2	1.25	5.75
3	2.50	7.00
4	3.75	8.25
5	5.00	9.50
6	6.25	10.75
7	7.50	12.00
8	8.75	13.25
9	10.00	14.50
10	11.25	15.75
11	12.50	17.00
12	13.75	18.25
13	15.00	19.50
14	16.25	20.75
15	17.50	22.00

TITLE

.049"(1.25mm) Wire to Board Horizontal Wafer

.x ±0.30 x° ±2°  
.xx ±0.20 DIMENSION  
.xxx ±0.10 TOLERANCE

C&J Connector

RoHS Compliant @ <http://www.cnj.tw/>

P/N	W128H**T0S	CHECKED	David	UNIT	mm	DATE	2013/10/20
DRAWN	Michael	APPROVED	Lily	SCALE	1:1	REV	A

# ☆☆☆ 128 Series ☆☆☆

P/N: W128V\*\*T0S

Material: Nylon 9T, UL 94V-0, White

Conductor: Brass, Tin-Plated

Available: 2~15P

Current Rating: 1A AC/DC

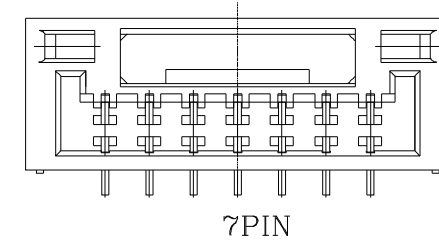
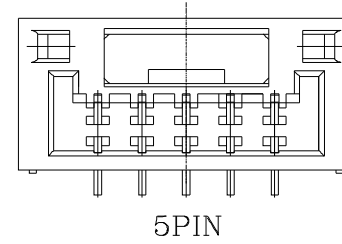
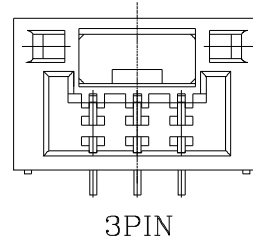
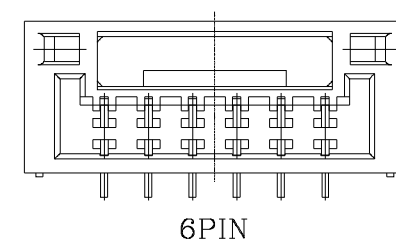
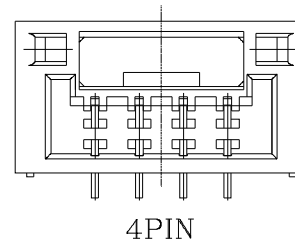
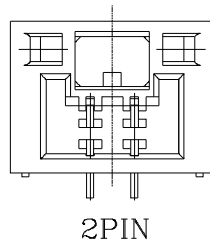
Voltage Rating: 50V AC/DC

Contact Resistance: 30m Max.

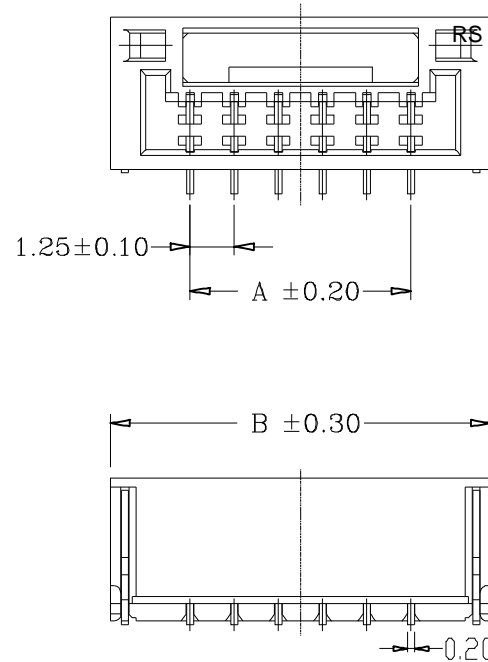
Insulation Resistance: 100M Min.

Withstanding Voltage: 500V AC/minute

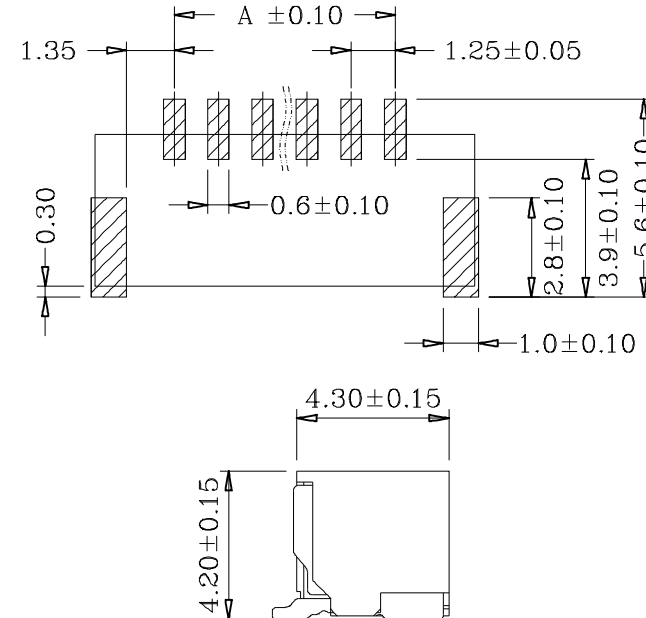
Operating Temperature Range: -25°~85°C



Circuitis	Dim. A	Dim. B
2	1.25	5.75
3	2.50	7.00
4	3.75	8.25
5	5.00	9.50
6	6.25	10.75
7	7.50	12.00
8	8.75	13.25
9	10.00	14.50
10	11.25	15.75
11	12.50	17.00
12	13.75	18.25
13	15.00	19.50
14	16.25	20.75
15	17.50	22.00



### RECOMMENDED P.C.BOARD HOLE DIMM.



TITLE		.049"(1.25mm) Wire to Board Vertical Wafer						.x ±0.30 x° ±2° .xx ±0.20 DIMENSION .xxx ±0.10 TOLERANCE	
P/N	W128V**T0S	CHECKED	David	UNIT	mm	DATE	2013/10/20		
DRAWN	Michael	APPROVED	Lily	SCALE	1:1	REV	A		

RoHS Compliant @ <http://www.cnj.tw/>