

☆☆☆ 201 Series ☆☆☆

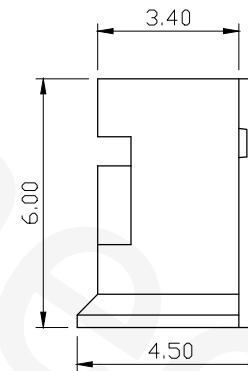
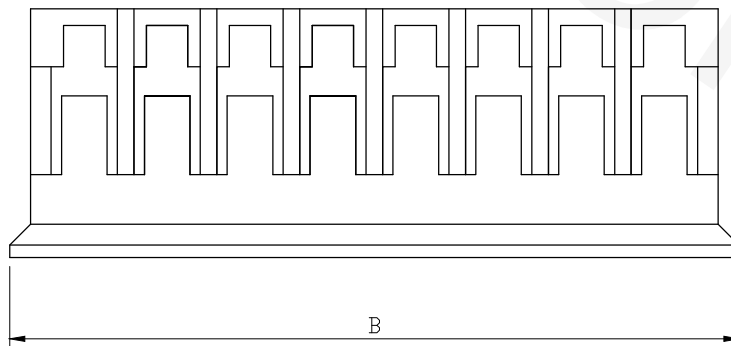
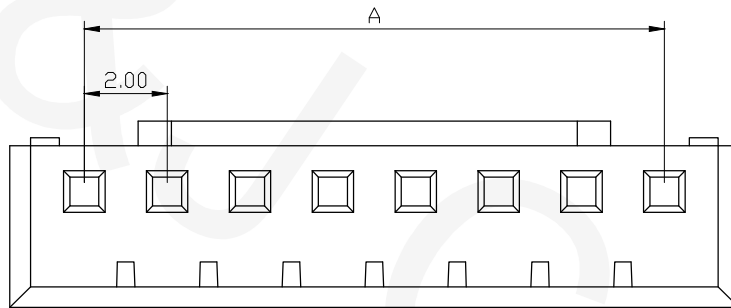
P/N: H201S**000

Material: Nylon 6/6, UL 94V-2, Orange

Available: 2~15P

Mate with W201

REVISIONS			
REV	DESCRIPTION	DATE	DRAWN
A			



Circuitis	Dim. A	Dim. B
2	2.00	5.60
3	4.00	7.60
4	6.00	9.60
5	8.00	11.60
6	10.00	13.60
7	12.00	15.60
8	14.00	17.60
9	16.00	19.60
10	18.00	21.60
11	20.00	23.60
12	22.00	25.60
13	24.00	27.60
14	26.00	29.60
15	28.00	31.60

RoHS Compliant



TEL: 886-2-86871898 FAX: 886-2-86872959
 Mail: tceldh@gmail.com Web: http://www.cnj.tw/

TITLE

.079"(2.0mm) Wire to Board Housing

DIMENSION TOLERANCE

.x ±0.30 x° ±2°
 .xx ±0.20
 .xxx ±0.10

P/N	H201S**000	CHECKED	David	UNIT	mm	DATE	2010/08/03
DRAWN	Michael	APPROVED	Lily	SCALE	1:1	REV	A

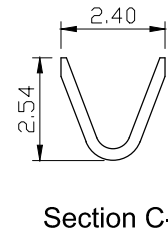
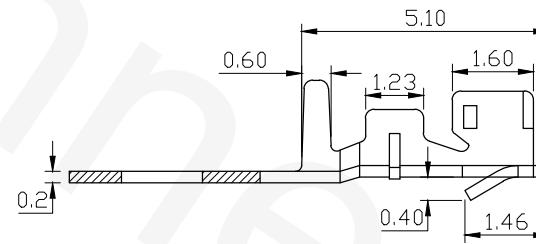
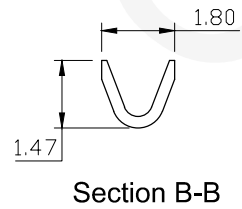
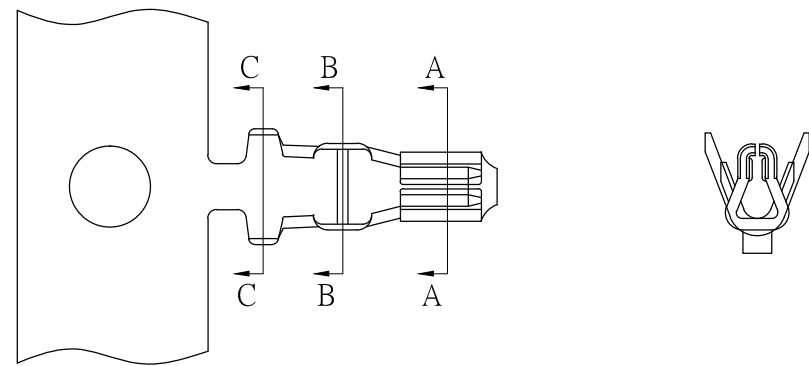
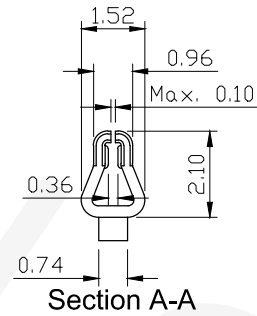
☆☆☆ 201 Series ☆☆☆

P/N: T201P00T00

Conductor: Phosphor Bronze/ Tin-Plated

Thickness: 0.2mm

REVISIONS			
REV	DESCRIPTION	DATE	DRAWN
A			



RoHS Compliant



TEL: 886-2-86871898 FAX: 886-2-86872959
Mail: tceldh@gmail.com Web: http://www.cnj.tw/

TITLE

.079"(2.0mm) Crimp Terminal

DIMENSION TOLERANCE

.x ±0.30 x° ±2°
.xx ±0.20
.xxx ±0.10

P/N	T201P00T00	CHECKED	David	UNIT	mm	DATE	2010/08/04
DRAWN	Michael	APPROVED	Lily	SCALE	1:1	REV	A

☆☆☆ 201 Series ☆☆☆

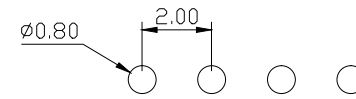
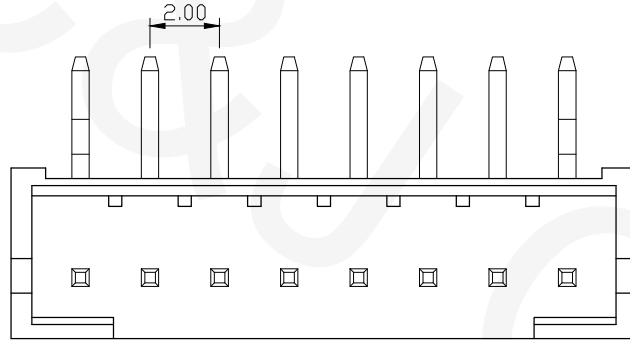
P/N: W201H**T00

Material: Nylon 6/6, UL 94V-0, Gray

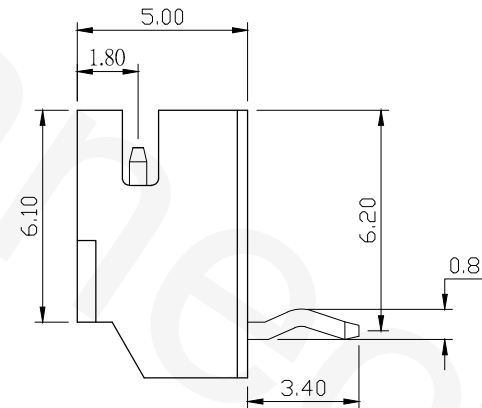
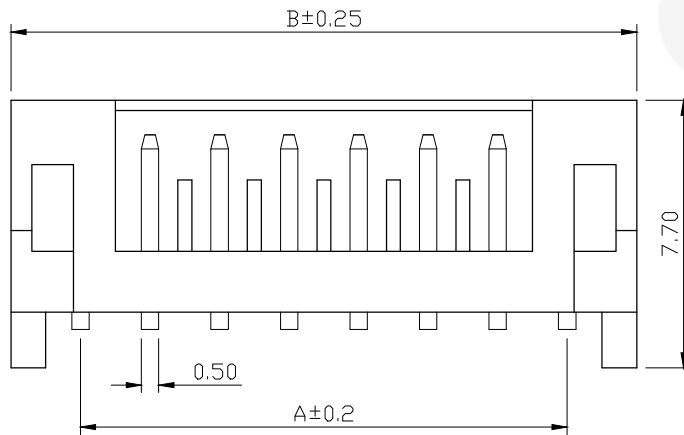
Conductor: Brass, Tin-Plated

Available: 2~15P

Mate with H201



RECOMMENDED P.C.BOARD HOLE DIMM.



REVISIONS			
REV	DESCRIPTION	DATE	DRAWN
A			

Circuitis	Dim. A	Dim. B
2	2.00	6.00
3	4.00	8.00
4	6.00	10.00
5	8.00	12.00
6	10.00	14.00
7	12.00	16.00
8	14.00	18.00
9	16.00	20.00
10	18.00	22.00
11	20.00	24.00
12	22.00	26.00
13	24.00	28.00
14	26.00	30.00
15	28.00	32.00

RoHS Compliant



TEL: 886-2-86871898 FAX: 886-2-86872959
Mail: tceldh@gmail.com Web: http://www.cnj.tw/

TITLE

.079"(2.0mm) Wire to Board Horizontal Wafer

DIMENSION TOLERANCE

.x ±0.30 x° ±2°
.xx ±0.20
.xxx ±0.10

P/N	W201H**T00	CHECKED	David	UNIT	mm	DATE	2010/08/26
DRAWN	Michael	APPROVED	Lily	SCALE	1:1	REV	A

☆☆☆ 201 Series ☆☆☆

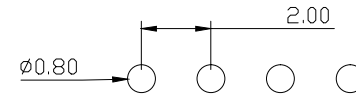
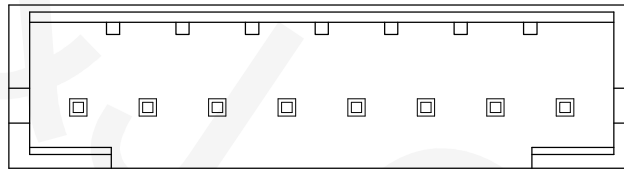
P/N: W201V**T00

Material: Nylon 6/6, UL 94V-0, Gray

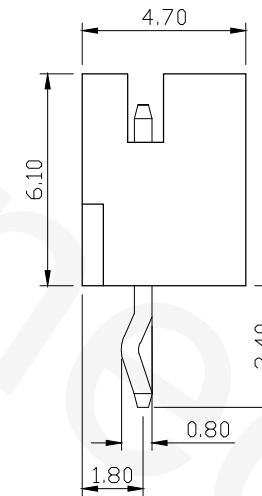
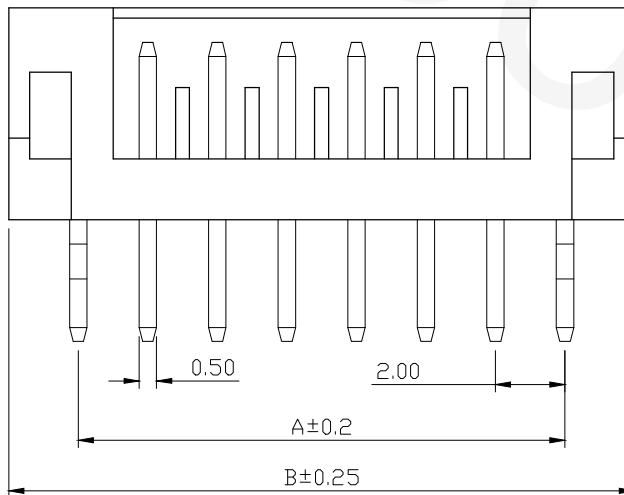
Conductor: Brass, Tin-Plated

Available: 2~15P

Mate with H201



RECOMMENDED P.C.BOARD HOLE DIMM.



REVISIONS			
REV	DESCRIPTION	DATE	DRAWN
A			

Circuitis	Dim. A	Dim. B
2	2.00	6.00
3	4.00	8.00
4	6.00	10.00
5	8.00	12.00
6	10.00	14.00
7	12.00	16.00
8	14.00	18.00
9	16.00	20.00
10	18.00	22.00
11	20.00	24.00
12	22.00	26.00
13	24.00	28.00
14	26.00	30.00
15	28.00	32.00

RoHS Compliant



TEL: 886-2-86871898 FAX: 886-2-86872959
 Mail: tceldh@gmail.com Web: http://www.cnj.tw/

TITLE

.079"(2.0mm) Wire to Board Vertical Wafer

DIMENSION TOLERANCE

.x ±0.30 x° ±2°
 .xx ±0.20
 .xxx ±0.10

P/N	W201V**T00	CHECKED	David	UNIT	mm	DATE	2010/08/26
DRAWN	Michael	APPROVED	Lily	SCALE	1:1	REV	A