

A

B

C

D

E

F

☆☆☆ 514 Series ☆☆☆

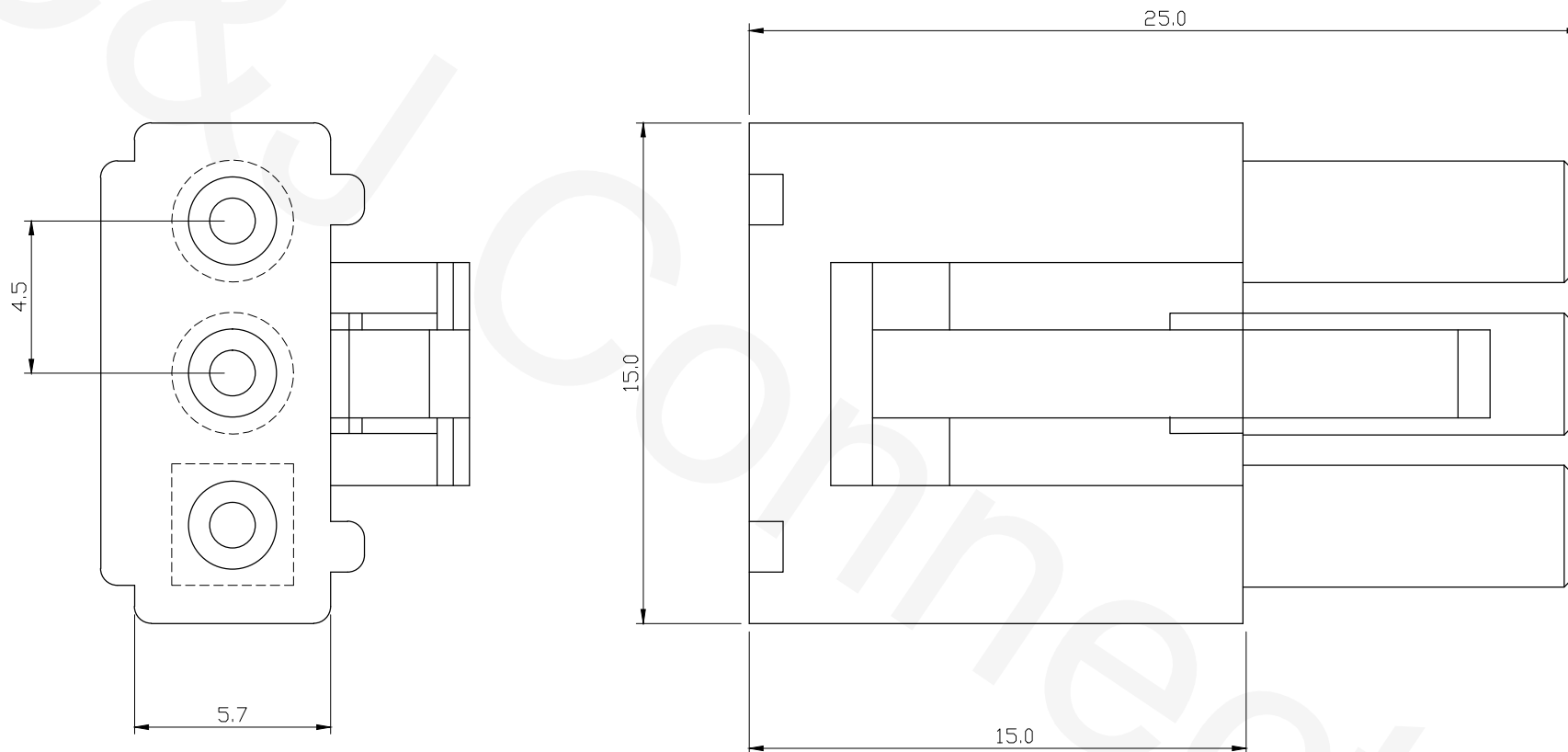
P/N: H514M03001

Material: Nylon 6/6, UL 94V-2, White

Mate with H514F

REVISIONS

REV	DESCRIPTION	DATE	DRAWN
A			



RoHS Compliant



C&J Connector

TEL: 886-2-86871898 FAX: 886-2-86872959
 Mail: tceldh@gmail.com Web: <http://www.cnj.tw/>

TITLE

.051"(1.3mm) Wire to Wire Male Housing

DIMENSION TOLERANCE

.x ±0.30 x° ±2°

.xx ±0.20

.xxx ±0.10

P/N	H514M03001	CHECKED	David	UNIT	mm	DATE	2010/08/13
DRAWN	Michael	APPROVED	Lily	SCALE	1:1	REV	A

A

B

C

D

E

F

A

B

C

D

E

F

☆☆☆ 514 Series ☆☆☆

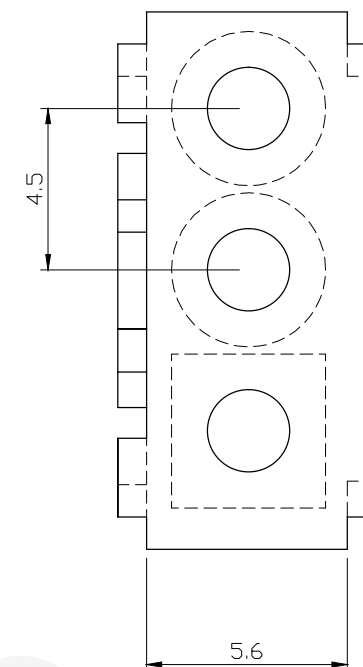
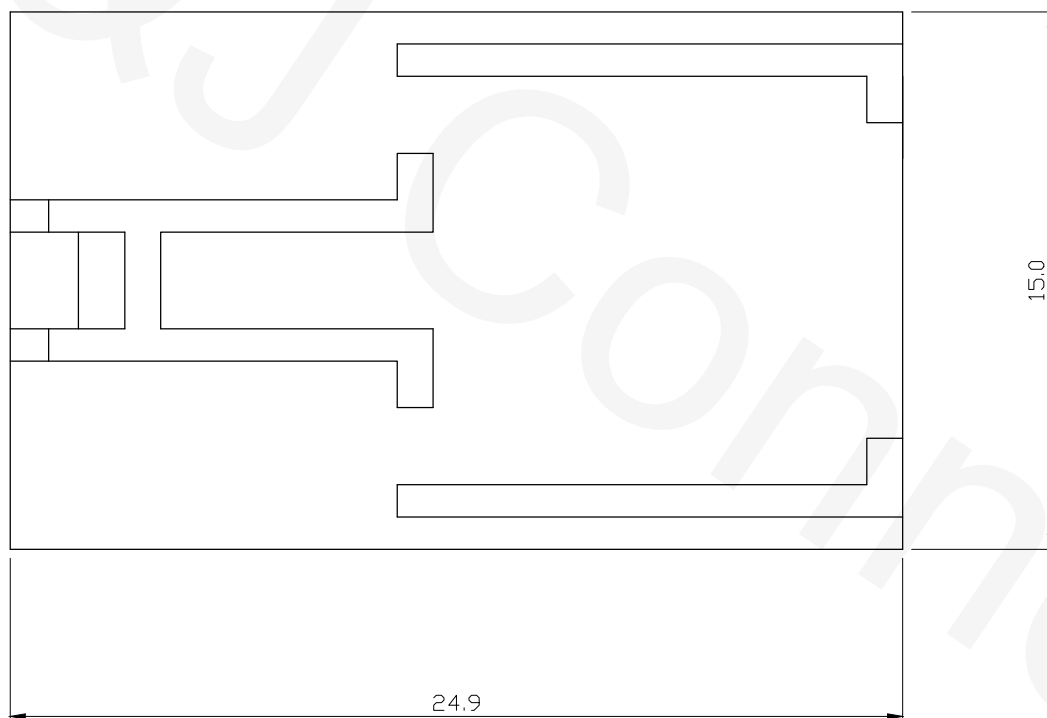
P/N: H514F03001

Material: Nylon 6/6, UL 94V-2, White

Mate with H514M

REVISIONS

REV	DESCRIPTION	DATE	DRAWN
A			



RoHS Compliant

**C&J Connector**

TEL: 886-2-86871898 FAX: 886-2-86872959
 Mail: tceldh@gmail.com Web: <http://www.cnj.tw/>

TITLE

.051"(1.3mm) Wire to Wire Female Housing

DIMENSION TOLERANCE

.x ±0.30 x° ±2°

.xx ±0.20

.xxx ±0.10

P/N	H514F03001	CHECKED	David	UNIT	mm	DATE	2010/08/13
DRAWN	Michael	APPROVED	Lily	SCALE	1:1	REV	A

A

B

C

D

E

F

☆☆☆ 514 Series ☆☆☆

P/N: H514F020E1

Material: Nylon 6/6, UL 94V-0

Wire Range: AWG#20~24

Mate with H514M02001

Current Rating: 5A

Voltage Rating: 250V AC/DC

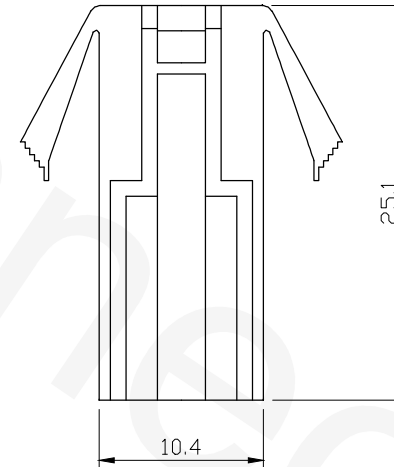
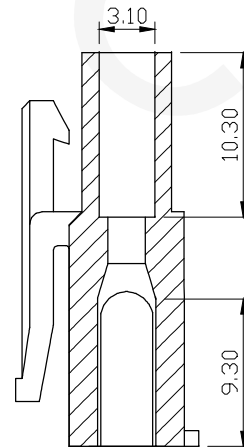
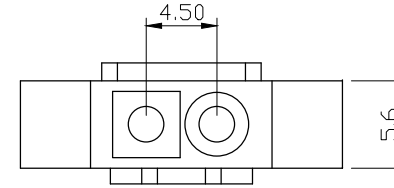
Contact Resistance: 10mΩ Max.

Insulation Resistance: 1000MΩ Min.

Withstand Voltage: 1500V AC/minute

Temperature Range: -25°C~85°C

REVISIONS			
REV	DESCRIPTION	DATE	DRAWN
A			



RoHS Compliant



TEL: 886-2-86871898 FAX: 886-2-86872959
 Mail: tceldh@gmail.com Web: http://www.cnj.tw/

TITLE
 .177"(4.5mm) Wire to Wire 2P Eared Female Housing

DIMENSION TOLERANCE	
.x	±0.30 x° ±2°
.xx	±0.20
.xxx	±0.10

P/N	H514F020E1	CHECKED	David	UNIT	mm	DATE	2010/10/25
DRAWN	Michael	APPROVED	Lily	SCALE	1:1	REV	A

☆☆☆ 514 Series ☆☆☆

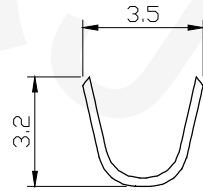
P/N: T514PF0T00

Conductor: 0.2mm, Brass/Phosphor Bronze, Tin-Plated

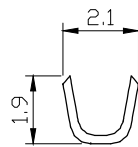
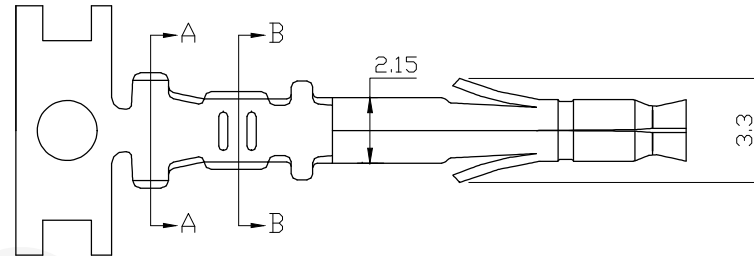
Wire Range: AWG#20~24

Mate with H514F

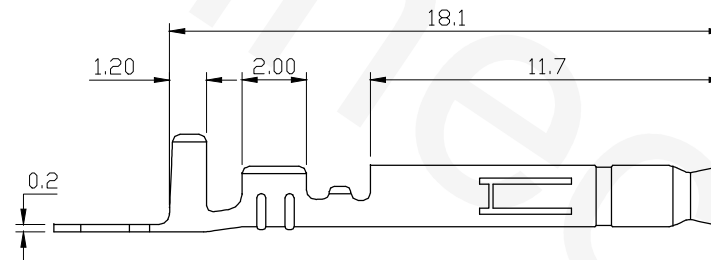
REVISIONS			
REV	DESCRIPTION	DATE	DRAWN
A			



Section A-A



Section B-B



RoHS Compliant



TITLE
.177"(4.5mm) Wire to Wire Crimp Terminal

DIMENSION TOLERANCE		
.x	±0.30	x° ±2°
.xx	±0.20	
.xxx	±0.10	

TEL: 886-2-86871898 FAX: 886-2-86872959
 Mail: tceldh@gmail.com Web: http://www.cnj.tw/

P/N	T514PF0T00	CHECKED	David	UNIT	mm	DATE	2010/10/25
DRAWN	Michael	APPROVED	Lily	SCALE	1:1	REV	A

☆☆☆ 514 Series ☆☆☆

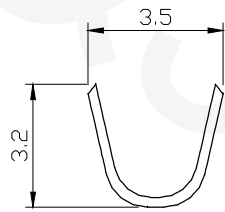
P/N: T514PM0T00

Conductor: 0.2mm, Brass/Phosphor Bronze, Tin-Plated

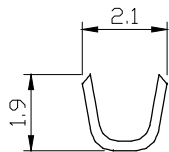
Wire Range: AWG#20~24

Mate with H514M

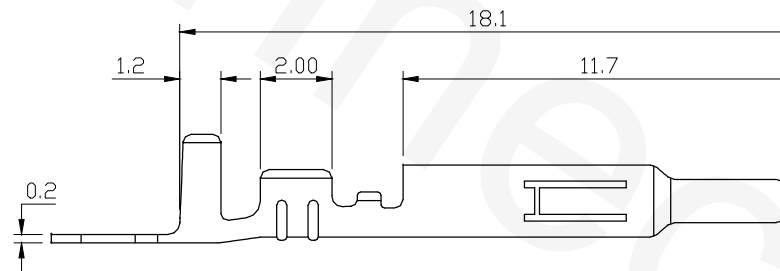
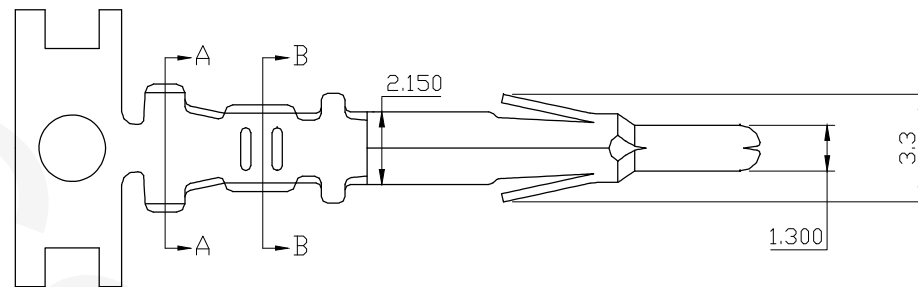
REVISIONS			
REV	DESCRIPTION	DATE	DRAWN
A			



Section A-A



Section B-B



RoHS Compliant



TEL: 886-2-86871898 FAX: 886-2-86872959
 Mail: tceldh@gmail.com Web: http://www.cnj.tw/

TITLE
 .177"(4.5mm) Wire to Wire Crimp Terminal

DIMENSION TOLERANCE	
.x	±0.30 x° ±2°
.xx	±0.20
.xxx	±0.10

P/N	T514PM0T00	CHECKED	David	UNIT	mm	DATE	2010/10/25
DRAWN	Michael	APPROVED	Lily	SCALE	1:1	REV	A