

☆☆☆ 207 Series ☆☆☆

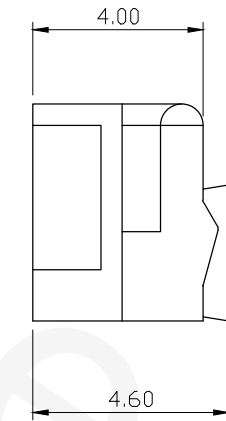
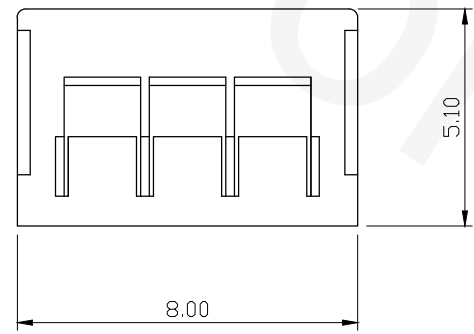
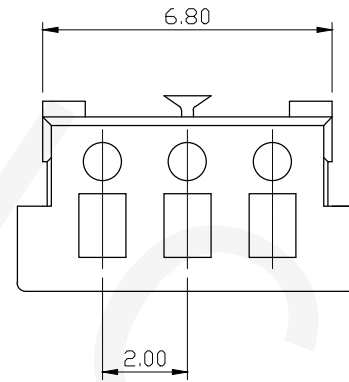
P/N: H207S**000

Material: Glass-Filled Polyamide, UL 94V-0, White

Available: *~*P

Mate with W207

REVISIONS			
REV	DESCRIPTION	DATE	DRAWN
A			



Circuitis	Dim. A	Dim. B
4	4.20	2.00
6	6.20	4.00
8	8.20	6.00
10	10.20	8.00
12	12.20	10.00
14	14.20	12.00
16	16.20	14.00
18	18.20	16.00
20	20.20	18.00
22	22.20	20.00
24	24.20	22.00
26	26.20	24.00
N	N*1+0.2	N*1-2
50	52.20	48.00

RoHS Compliant



TEL: 886-2-86871898 FAX: 886-2-86872959
 Mail: tceldh@gmail.com Web: http://www.cnj.tw/

TITLE							DIMENSION TOLERANCE	
.079"(2.0mm) Wire to Board Housing							.x ±0.30 x° ±2°	
							.xx ±0.20	
							.xxx ±0.10	
P/N	H207S**000	CHECKED	David	UNIT	mm	DATE	2010/08/03	
DRAWN	Michael	APPROVED	Lily	SCALE	1:1	REV	A	

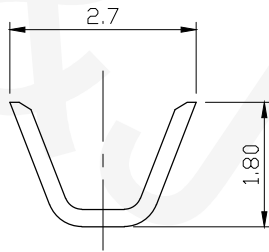
☆☆☆ 207 Series ☆☆☆

P/N: T207P00T00

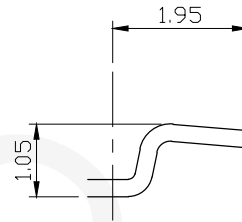
Conductor: Phosphor Bronze/ Tin-Plated

Thickness: 0.25mm

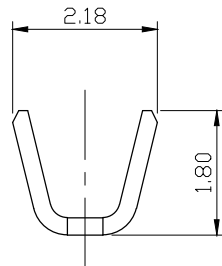
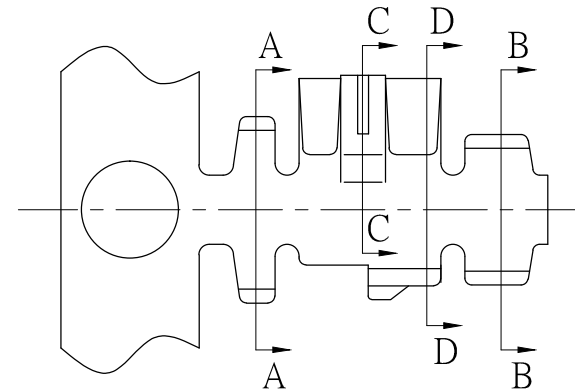
REVISIONS			
REV	DESCRIPTION	DATE	DRAWN
A			



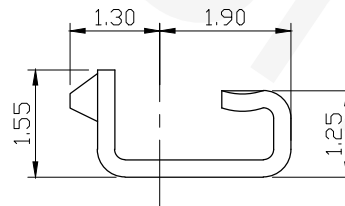
Section A-A



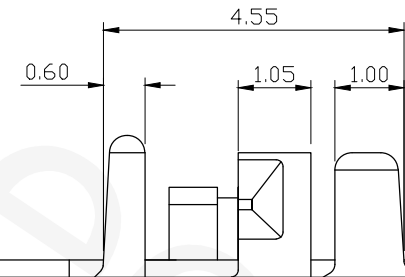
Section C-C



Section B-B



Section D-D



RoHS Compliant



TEL: 886-2-86871898 FAX: 886-2-86872959
 Mail: tceldh@gmail.com Web: http://www.cnj.tw/

TITLE

.079"(2.0mm) Crimp Terminal

DIMENSION TOLERANCE

.x ±0.30 x° ±2°
 .xx ±0.20
 .xxx ±0.10

P/N	T207P00T00	CHECKED	David	UNIT	mm	DATE	2010/08/04
DRAWN	Michael	APPROVED	Lily	SCALE	1:1	REV	A

☆☆☆ 207 Series ☆☆☆

P/N: W207H03T00

Material: Nylon 6/6, UL 94V-2, White

Conductor: Brass, Tin-Plated

Mate with H207

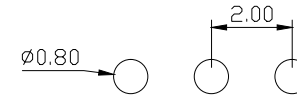
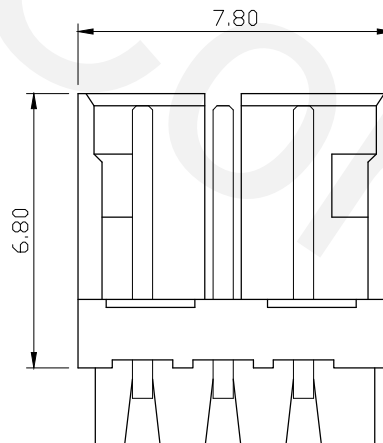
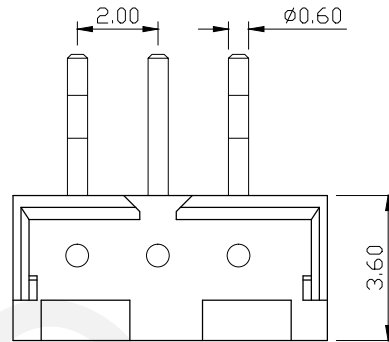
Contact Retention Force: 1.0Kgf Min.

Withstanding Voltage: 800V AC/minute

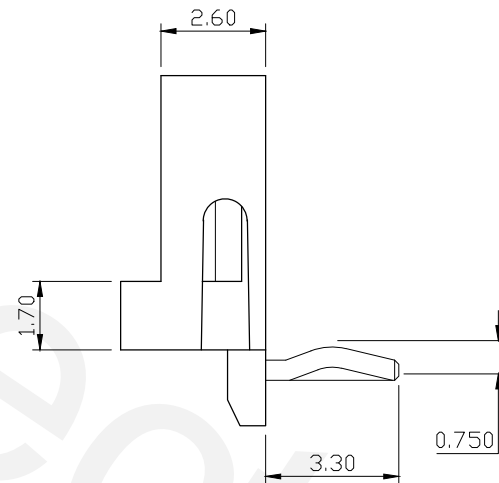
Contact Resistance: 20mΩ Max.

Insulation Resistance: 1000MΩ Max.

Wave Solder Capable: 235±5°C Max.



RECOMMENDED P.C. BOARD HOLE DIMM.



REVISIONS			
REV	DESCRIPTION	DATE	DRAWN
A			

RoHS Compliant



TEL: 886-2-86871898 FAX: 886-2-86872959
 Mail: tceldh@gmail.com Web: http://www.cnj.tw/

TITLE

.079"(2.0mm) Wire to Board Horizontal Wafer

DIMENSION TOLERANCE

.x ±0.30 x° ±2°
 .xx ±0.20
 .xxx ±0.10

P/N	W207H03T00	CHECKED	David	UNIT	mm	DATE	2010/10/25
DRAWN	Michael	APPROVED	Lily	SCALE	1:1	REV	A

☆☆☆ 207 Series ☆☆☆

P/N: W207V03T00

Material: Nylon 6/6, UL 94V-0, Natural

Conductor: 100u" Tin-Plated over 50u" min Ni

Mate with H207

Contact Retention Force: 1.0Kgf Min.

Withstanding Voltage: 800V AC/minute

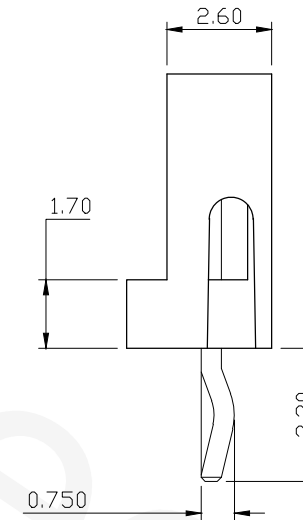
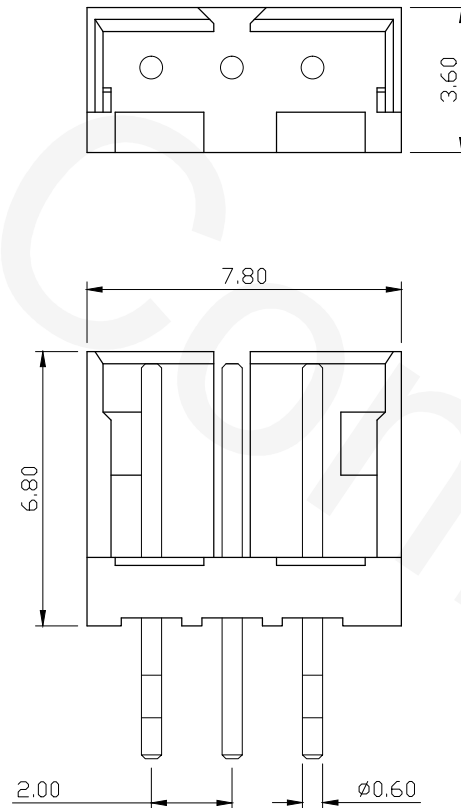
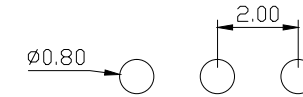
Contact Resistance: 20mΩ Max.

Insulation Resistance: 1000MΩ Max.

Wave Solder Capable: 235±5°C Max.

REVISIONS			
REV	DESCRIPTION	DATE	DRAWN
A			

RECOMMENDED P.C.BOARD HOLE DIMM.



RoHS Compliant



TEL: 886-2-86871898 FAX: 886-2-86872959
 Mail: tceldh@gmail.com Web: http://www.cnj.tw/

TITLE

.079"(2.0mm) Wire to Board Vertical Wafer

DIMENSION TOLERANCE

.x ±0.30 x° ±2°
 .xx ±0.20
 .xxx ±0.10

P/N	W207V03T00	CHECKED	David	UNIT	mm	DATE	2010/10/25
DRAWN	Michael	APPROVED	Lily	SCALE	1:1	REV	A

☆☆☆ 207 Series ☆☆☆

P/N: W207V03TP0

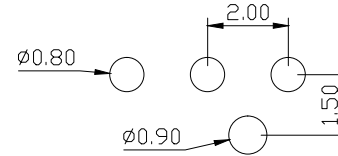
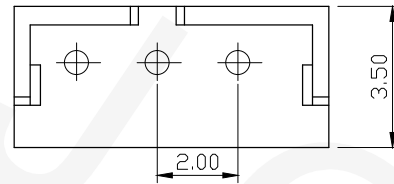
Material: Nylon 6/6, UL 94V-2, White

Conductor: Brass, Tin-Plated

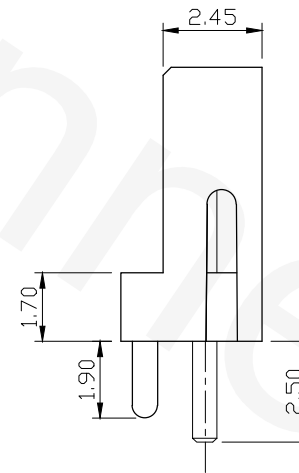
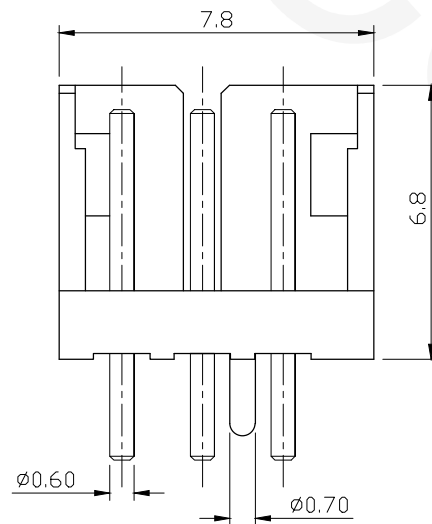
Available: 2~16P

Mate with H207

REVISIONS			
REV	DESCRIPTION	DATE	DRAWN
A			



RECOMMENDED P.C.BOARD HOLE DIMM.



RoHS Compliant



TEL: 886-2-86871898 FAX: 886-2-86872959
 Mail: tceldh@gmail.com Web: http://www.cnj.tw/

TITLE
 .079"(2.0mm) Wire to Board Vertical Wafer with Column

DIMENSION TOLERANCE	
.x	± 0.30 x° $\pm 2^\circ$
.xx	± 0.20
.xxx	± 0.10

P/N	W207V03TP0	CHECKED	David	UNIT	mm	DATE	2010/10/25
DRAWN	Michael	APPROVED	Lily	SCALE	1:1	REV	A