

☆☆☆ 210 Series ☆☆☆

P/N: W210V***00

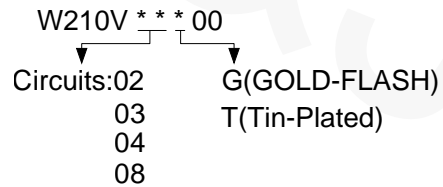
Material: Nylon 6/6, UL 94V-0, Nature

Conductor: Brass

Plating: Tin / GOLD-FLASH

Available: 2,3,4,8 Pins

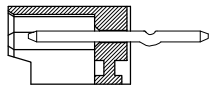
Ordering Information:



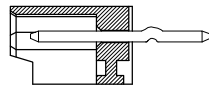
KINK:

Circuits \ Pin	1	2	3	4	5	6	7	8
8P	—	①	②	—	—	②	①	—
4P	①	②	②	①	—	—	—	—
3P	①	②	①	—	—	—	—	—
2P	—	—	—	—	—	—	—	—

KINK TYPE 1



KINK TYPE 2



RoHS Compliant



TEL: 886-2-86871898 FAX: 886-2-86872959
 Mail: tceldh@gmail.com Web: http://www.cnj.tw/

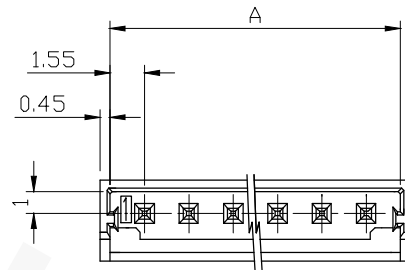
TITLE
 .079"(2.0mm) Wire to Board Wafer Assy (Lead-Free)

P/N	W210V***00	CHECKED	David	UNIT	mm	DATE	2010/07/30
DRAWN	Michael	APPROVED	Lily	SCALE	1:1	REV	A

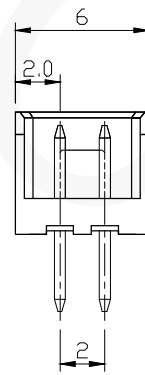
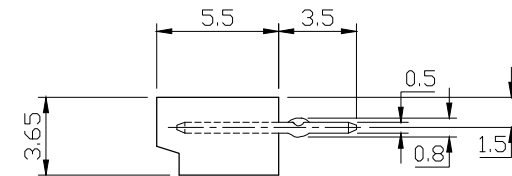
DIMENSION TOLERANCE

.x	±0.15	φ	±0.15
.xx	±0.10		
.xxx	±0.05		

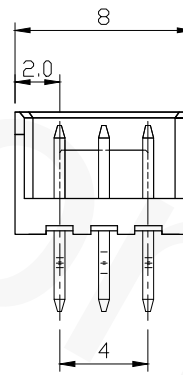
REVISIONS			
REV	DESCRIPTION	DATE	DRAWN
A			



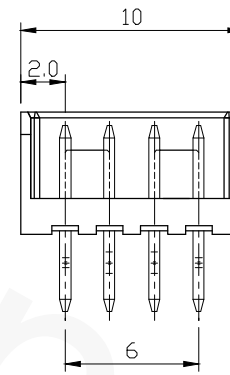
Circuits	Dim. A
3	7.1
4	9.1
8	17.1



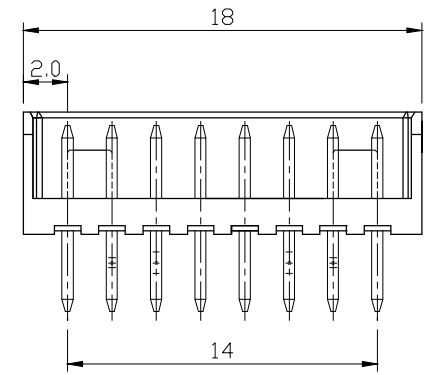
2P



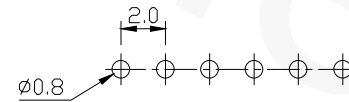
3P



4P



8P



RECOMMENDED P.C.BOARD HOLE DIMM.