

# ☆☆☆ 501 Series ☆☆☆

P/N: W501V\*\*T00

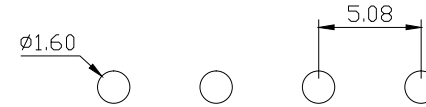
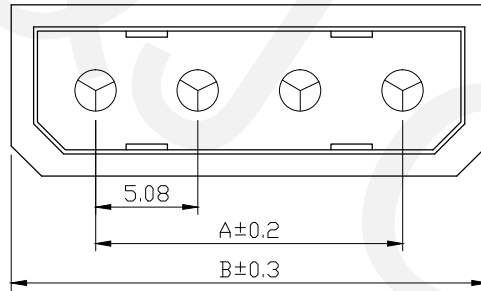
Material: Nylon 6/6, UL 94V-2, Natural

Conductor: Brass, Tin-Plated

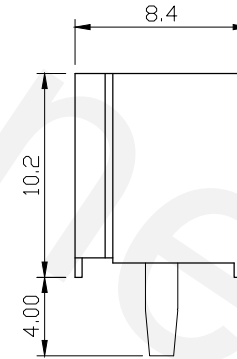
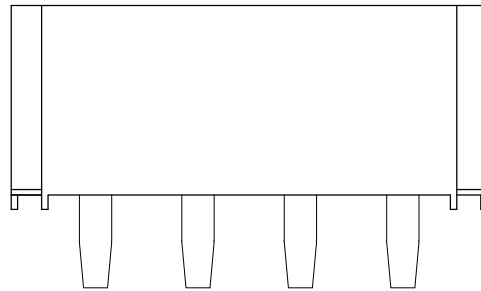
Available: \*P

Mate with H501

| REVISIONS |             |      |       |
|-----------|-------------|------|-------|
| REV       | DESCRIPTION | DATE | DRAWN |
| A         |             |      |       |



RECOMMENDED P.C. BOARD HOLE DIMM.



| Circuitis | Dim. A | Dim. B |
|-----------|--------|--------|
| 2         | 5.08   |        |
| 3         | 10.16  |        |
| 4         | 15.24  |        |
| 5         | 20.32  |        |
| 6         | 25.40  |        |
| 7         | 30.48  |        |
| 8         | 35.56  |        |
| 9         | 40.64  |        |
| 10        | 45.72  |        |
| 11        | 50.80  |        |
| 12        | 55.88  |        |

RoHS Compliant



TEL: 886-2-86871898 FAX: 886-2-86872959  
 Mail: tceldh@gmail.com Web: http://www.cnj.tw/

TITLE

.200"(5.08mm) Wire to Wire Vertical Wafer

DIMENSION TOLERANCE

.x ±0.30 x° ±2°  
 .xx ±0.20  
 .xxx ±0.10

|       |            |          |       |       |     |      |            |
|-------|------------|----------|-------|-------|-----|------|------------|
| P/N   | W501V**T00 | CHECKED  | David | UNIT  | mm  | DATE | 2010/09/01 |
| DRAWN | Michael    | APPROVED | Lily  | SCALE | 1:1 | REV  | A          |

# ☆☆☆ 501 Series ☆☆☆

P/N: W501V\*\*TP0

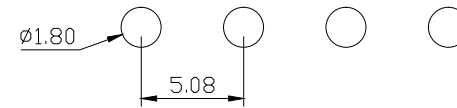
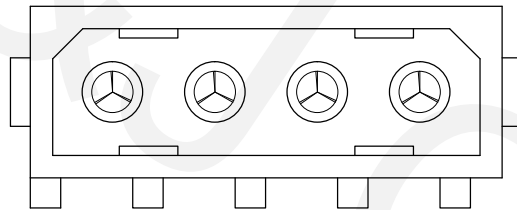
Material: Nylon 6/6, UL 94V-2, Natural

Conductor: Brass, Tin-Plated

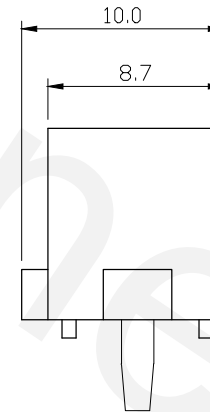
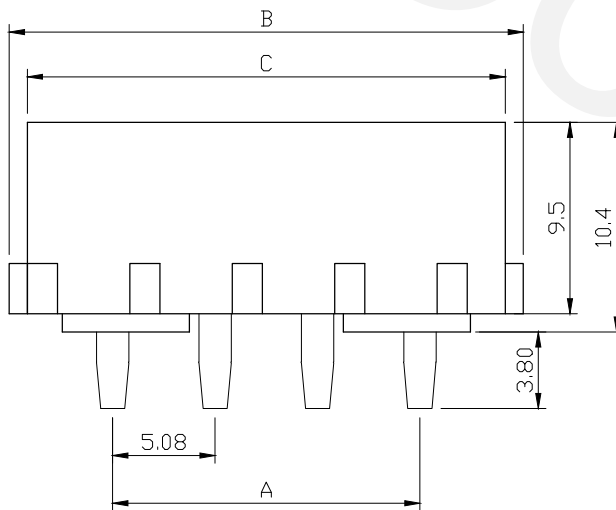
Available: \*P

Mate with H501

| REVISIONS |             |      |       |
|-----------|-------------|------|-------|
| REV       | DESCRIPTION | DATE | DRAWN |
| A         |             |      |       |



RECOMMENDED P.C.BOARD HOLE DIMM.



| Circuitis | Dim. A | Dim. B |
|-----------|--------|--------|
| 2         | 5.08   |        |
| 3         | 10.16  |        |
| 4         | 15.24  |        |
| 5         | 20.32  |        |
| 6         | 25.40  |        |
| 7         | 30.48  |        |
| 8         | 35.56  |        |
| 9         | 40.64  |        |
| 10        | 45.72  |        |
| 11        | 50.80  |        |
| 12        | 55.88  |        |

RoHS Compliant



TEL: 886-2-86871898 FAX: 886-2-86872959  
 Mail: tceldh@gmail.com Web: http://www.cnj.tw/

TITLE  
 .200"(5.08mm) Wire to Wire Vertical Wafer with Column

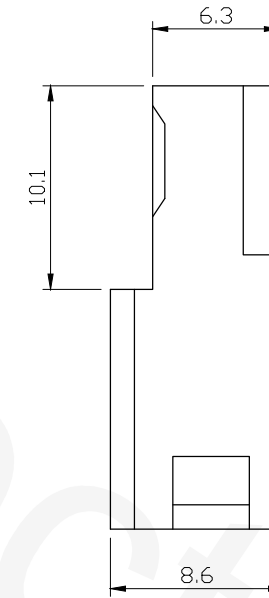
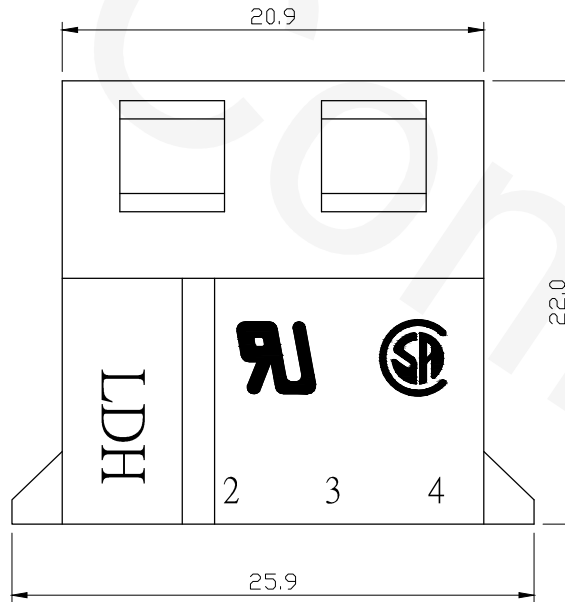
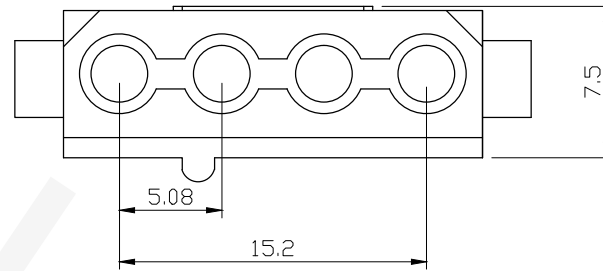
DIMENSION TOLERANCE  
 .x ±0.30 x° ±2°  
 .xx ±0.20  
 .xxx ±0.10

|       |            |          |       |       |     |      |            |
|-------|------------|----------|-------|-------|-----|------|------------|
| P/N   | W501V**TP0 | CHECKED  | David | UNIT  | mm  | DATE | 2010/09/01 |
| DRAWN | Michael    | APPROVED | Lily  | SCALE | 1:1 | REV  | A          |

☆☆☆ 501 Series ☆☆☆

P/N: H501M\*\*000

Material: Nylon 6/6, UL 94V-2, Natural  
Mate with W501



| REVISIONS |             |      |       |
|-----------|-------------|------|-------|
| REV       | DESCRIPTION | DATE | DRAWN |
| A         |             |      |       |

RoHS Compliant



TEL: 886-2-86871898 FAX: 886-2-86872959  
Mail: tceldh@gmail.com Web: http://www.cnj.tw/

TITLE

.200"(5.08mm) Wire to Wire Male Housing

DIMENSION TOLERANCE

.x ±0.30 x° ±2°  
.xx ±0.20  
.xxx ±0.10

|       |            |          |       |       |     |      |            |
|-------|------------|----------|-------|-------|-----|------|------------|
| P/N   | H501M**000 | CHECKED  | David | UNIT  | mm  | DATE | 2010/08/13 |
| DRAWN | Michael    | APPROVED | Lily  | SCALE | 1:1 | REV  | A          |

A

B

C

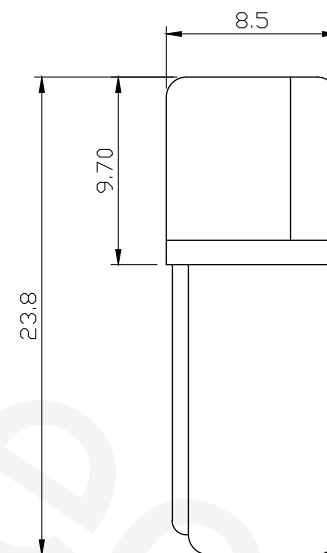
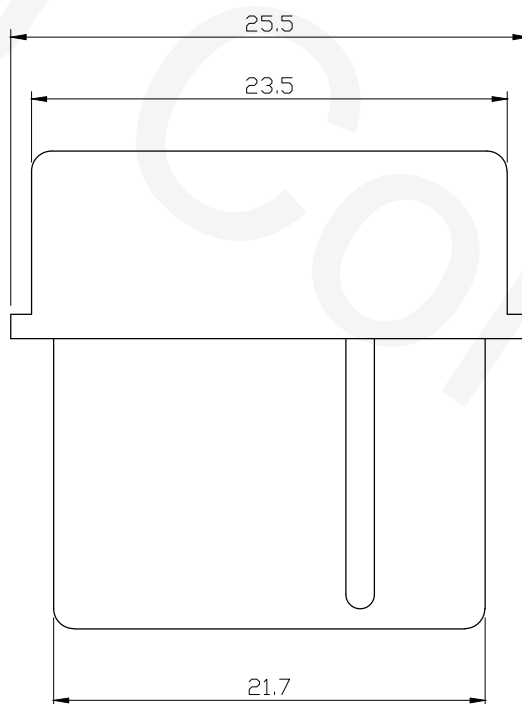
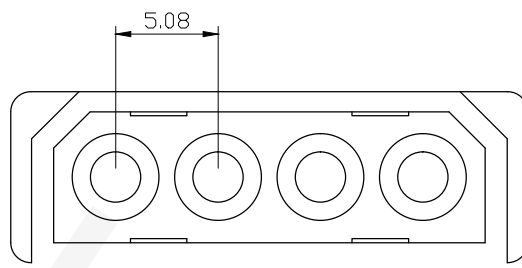
D

E

F

## ☆☆☆ 501 Series ☆☆☆

P/N: H501F\*\*000

Material: Nylon 6/6, UL 94V-2, Natural  
Mate with W501

## REVISIONS

| REV | DESCRIPTION | DATE | DRAWN |
|-----|-------------|------|-------|
| A   |             |      |       |

RoHS Compliant


**C&J Connector**

 TEL: 886-2-86871898 FAX: 886-2-86872959  
 Mail: tceldh@gmail.com Web: <http://www.cnj.tw/>

TITLE

.200"(5.08mm) Wire to Wire Female Housing

DIMENSION TOLERANCE

.x ±0.30 x° ±2°

.xx ±0.20

.xxx ±0.10

|       |            |          |       |       |     |      |            |
|-------|------------|----------|-------|-------|-----|------|------------|
| P/N   | H501F**000 | CHECKED  | David | UNIT  | mm  | DATE | 2010/08/13 |
| DRAWN | Michael    | APPROVED | Lily  | SCALE | 1:1 | REV  | A          |

A

B

C

D

E

F

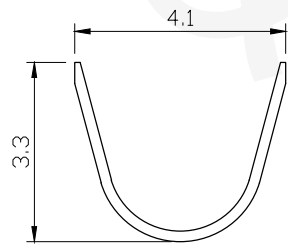
☆☆☆ 501 Series ☆☆☆

P/N: T501PF0T00

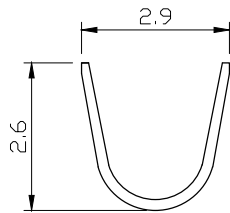
Conductor: Brass/ Tin-Plated

Thickness: 0.25mm

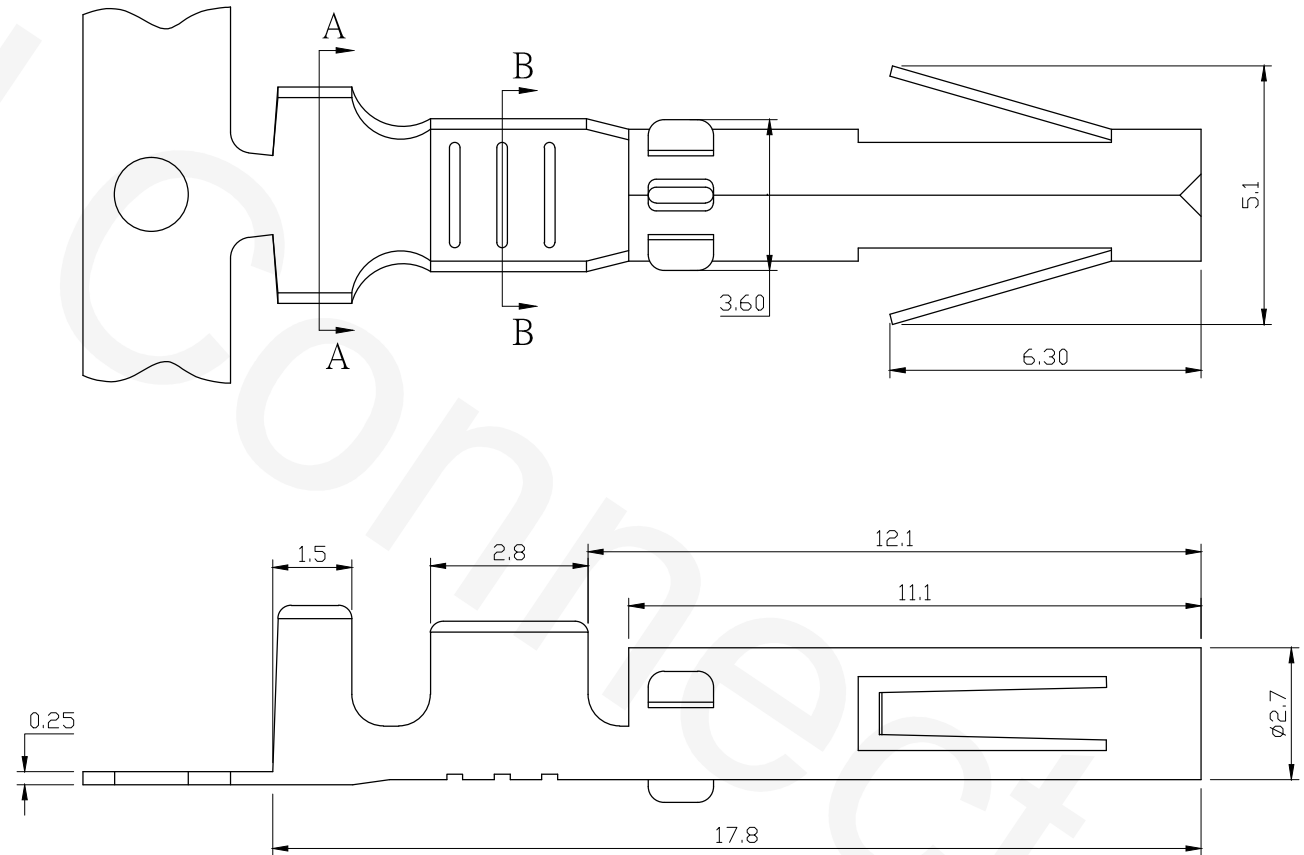
| REVISIONS |             |      |       |
|-----------|-------------|------|-------|
| REV       | DESCRIPTION | DATE | DRAWN |
| A         |             |      |       |



Section A-A



Section B-B



RoHS Compliant



TEL: 886-2-86871898 FAX: 886-2-86872959  
 Mail: tceldh@gmail.com Web: http://www.cnj.tw/

TITLE

.200"(5.08mm) Wire to Wire Crimp Terminal

DIMENSION TOLERANCE

.x ±0.30 x° ±2°  
 .xx ±0.20  
 .xxx ±0.10

|       |            |          |       |       |     |      |            |
|-------|------------|----------|-------|-------|-----|------|------------|
| P/N   | T501PF0T00 | CHECKED  | David | UNIT  | mm  | DATE | 2010/08/05 |
| DRAWN | Michael    | APPROVED | Lily  | SCALE | 1:1 | REV  | A          |